



PROPERTIES

- Great performance of installation process as a result of its lightness. It does not need machinery for its installation.
- High draining capacity.
- Rot-proof, it will not deteriorate over time.
- It resists to animal or vegetable parasites.
- The geotextile realizes the function of filter, retaining the thin particles of the soil and allowing a free flow of water, avoiding possible clogging of water drainage system.
- Polypropylene geotextile with CE marking. Production control certificate number 1773-CPD-1/001.
- DRENOTUBE[®] incorporates connectors between modules, quick coupler hose type.
- High resistance to compression and excellent capacity of drainage.

APPLICATION FIELDS

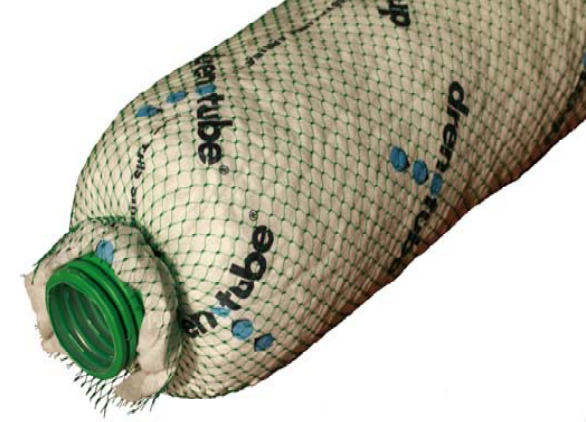
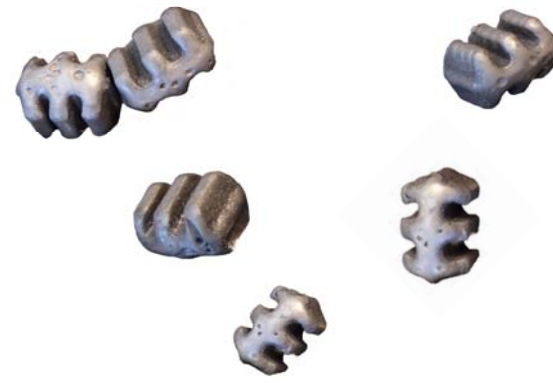
- Longitudinal trench drainages.
- Drainages at the base of containing walls, bridge abutments, gable ends of cut-and-cover tunnels.
- Drainages of sport fields, agriculture fields, gardening and landscaping.

COMPOSITION DRENOTUBE

- Corrugated slotted pipe with double wall (smooth interior) made of high density polyethylene. Includes connection hose.
- EPS particles. They replace the gravel.
- Nonwoven geotextile made of high tenacity filaments of polypropylene and UV stabilized.
- Binding mesh of high-density polyethylene.



THE GRAVELLESS FRENCH DRAIN



THE LONGITUDINAL DRAINAGE SYSTEM WITHOUT GRAVEL

DRENOTUBE® speeds up the construction process of in-ditch drainages compared with the classical method. It includes the three basic components of longitudinal drainage systems in one only product. That's why its application is widely more rapid than the application of the three components of the classical french drain. **DRENOTUBE®** geocomposite has particles of EPS thanks to which, gravel is avoided. **DRENOTUBE®** implicates saving time, machinery deployment and money.



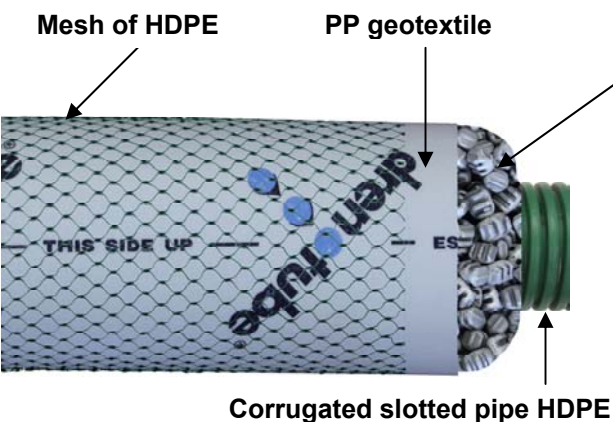
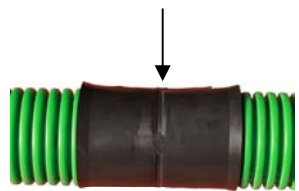
APPLICATION FIELDS

DRENOTUBE® is applicable to all kinds of longitudinal drains, either in agriculture, landscaping or public works: agriculture land, sport fields, gardens, extrados of retaining walls, structures of cut-and-cover tunnels, bridge abutments or building foundations.

DRENOTUBE®'s contributions are:

- Minor risk of suffering long floods on roads, forest tracks, sport fields, landscaped zones, golf courses.
- Greater control of groundwater flows, prevention of diffusion of pollution in dumps.
- Greater control of groundwater level.
- Dissipation of hydrostatic pressure on underground structures.
- Lower incidence of water affectations in underground structures.
- Greater durability of concrete.

Connection hose



REFERENCES	D.pipe	D.drenotube	Length
DR300L6:	Ø110mm	300mm	6m
DR370L6:	Ø160mm	370mm	6m
DR300L3:	Ø110mm	300mm	3m *
DR370L3:	Ø160mm	370mm	3m *

* es pedido especial

ADVANTAGES WITH REGARD TO THE TRADITIONAL FRENCH DRAIN

DRENOTUBE® allows a faster and easier construction of soil drainages and reducing the price of installation compared with traditional systems. This is thanks to the fact of being "all in one" product, avoiding the use of gravel and to its lightness.

SYSTEM "ALL IN ONE"

Whereas with the traditional system many manoeuvres are needed to place the geotextile, to distribute and to extend the gravel and finally, to close the geotextile, **DRENOTUBE®** only needs one step: its placement. In addition, the modules are 3 or 6 m long, making the construction process 4 times faster than with the traditional system.

WITHOUT GRAVEL

The gravel needed for the construction of drainages with the traditional method involves machinery for doing a great amount of manoeuvres for distributing the gravel along the ditches, a process that entails a lot of time and money. Using **DRENOTUBE®** gravel is excluded and therefore all the work connected with it, making way for a faster and more economic way of constructing drainages.

VERY LIGHT

Its weight makes easier its transport and handling, allowing a rapid and easy installation with not necessarily specialized personnel. Thanks to its lightness, only one worker is needed when the 3 m long module is used and two workers when the 6 m module is used. In addition, its lightness entails no labour risk at all for the workers.

PREFORMED PRODUCT

As all preformed product, **DRENOTUBE®** is subject to stipulated quality controls in industry. On the other hand, drainages realized on site possess a major susceptibility of having constructive faults since they depend in large degree of the skill of the workers.

SUSTAINABILITY

Using **DRENOTUBE®** there's a lower consumption of arid and consequently, there's a lower proliferation of extraction centres. By the way, recycled polymers are used in the fabrication of **DRENOTUBE®** geocomposite.

